

# Product End-of-Life Instructions

**Product Range:** Kaedra

**Marketing Model/Name:** (List of multiple models if applicable)

13156

**Purpose:**

The product family must be disposed according to the legislation of the country. This document is intended for use by end of life recyclers or treatment facilities. It provides the basic information to assure an appropriate end of life treatment for the components and materials of the product.

**Note :**

This product family is not in the scope of EU directive 2002/96/EC, Waste Electrical and Electronic Equipment (WEEE).



Size in mm:

**H x L x D in mm: 460 x 340 x 160**

**Weight in Kg:**

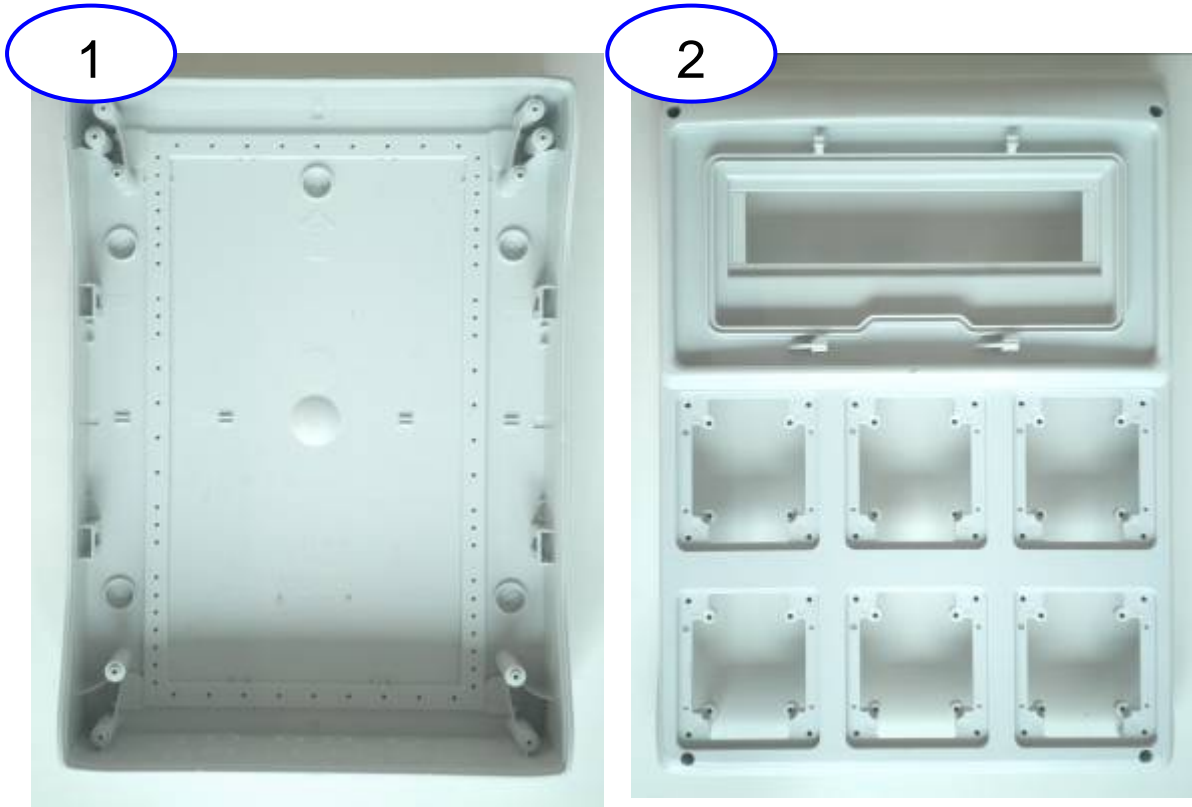
Between 0,253 and 10,4

## Operations recommended for the end of life treatment

There are several steps to process the products at the end of life so as to recover components, materials or energy :  
Reuse → Separation for special treatment → Other dismantling → Shredding.

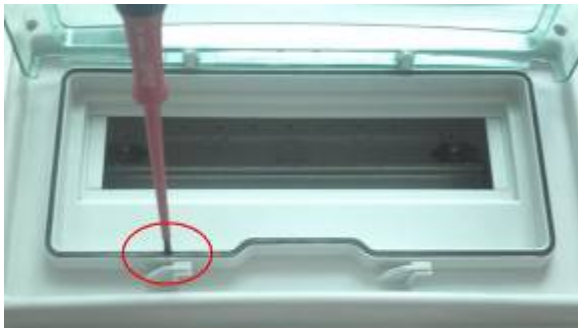
The components of the products that optimize the recycling performances are listed, identified and located hereunder.

Element of separation for special treatment:

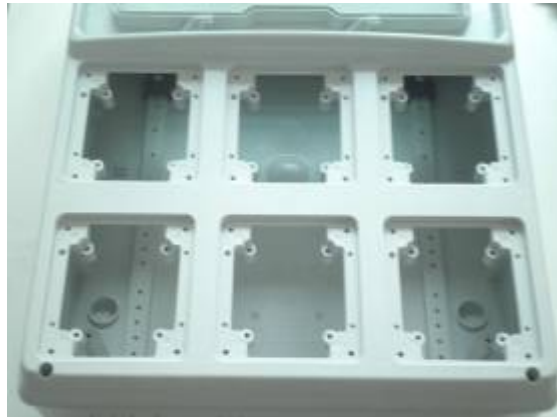


Process of dismantling:  
1) Remove the gasket from the front face

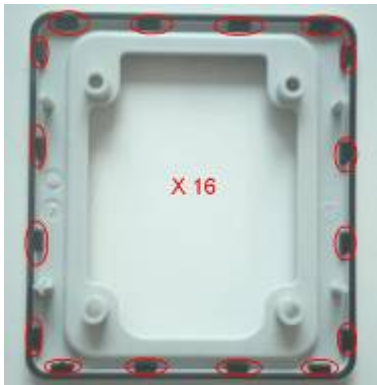




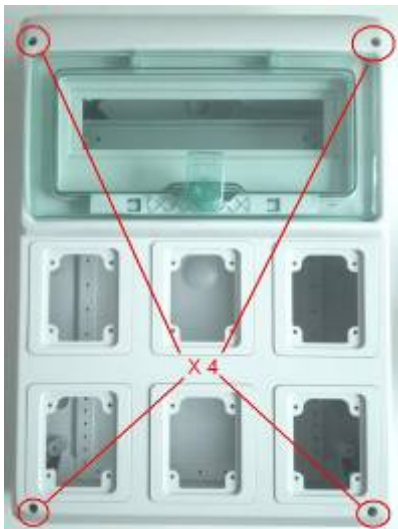
2) Remove the open plates from the front face



3) Keep the open plates and remove the gasket from that ones

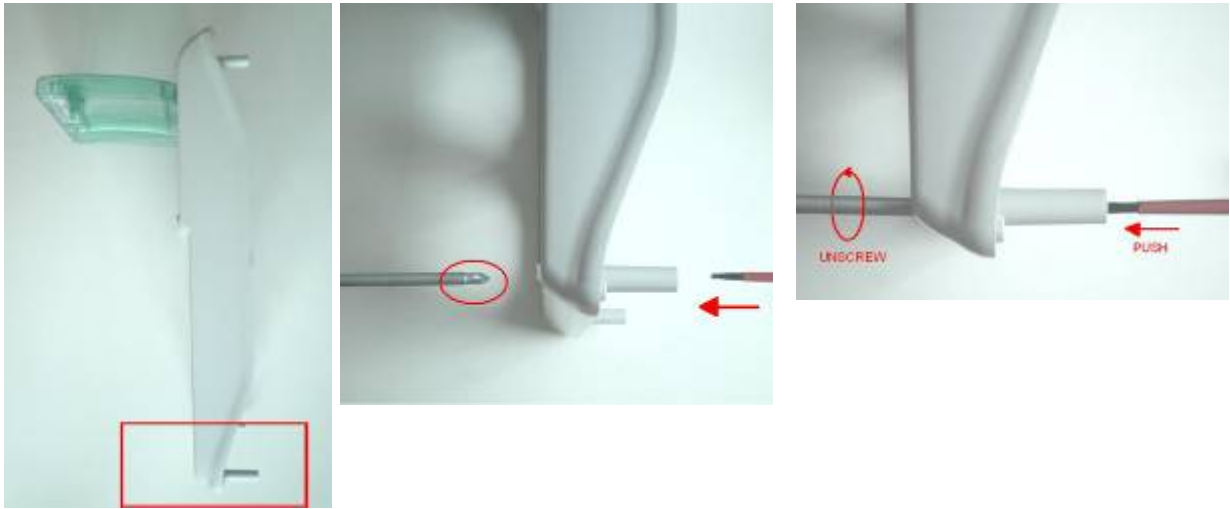


4) Unscrew the front face with the appropriate screwdriver



front face

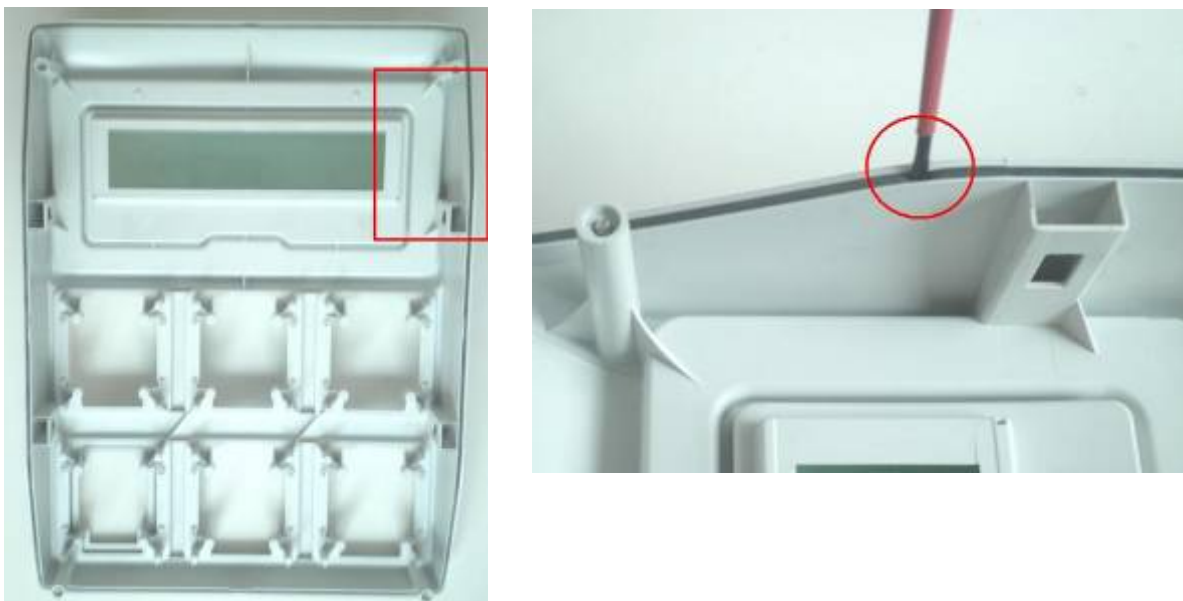
Note: Push and , in the same time, unscrew and remove the screws from the



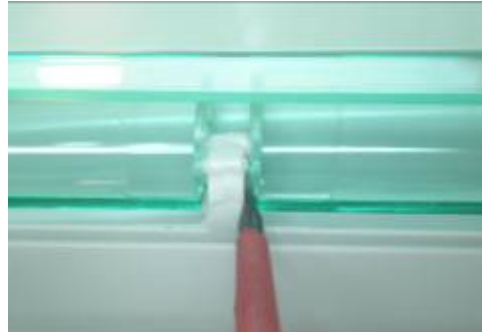
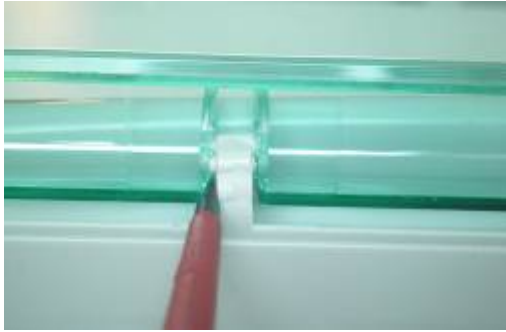
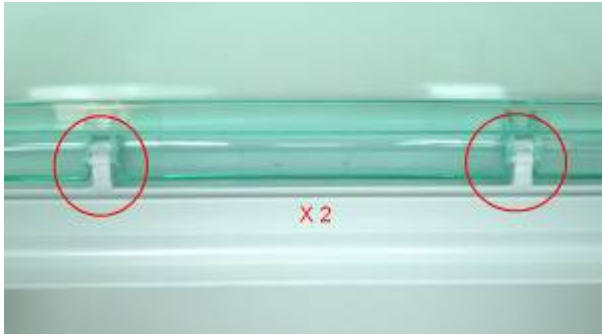
5) Detach the front face from the base



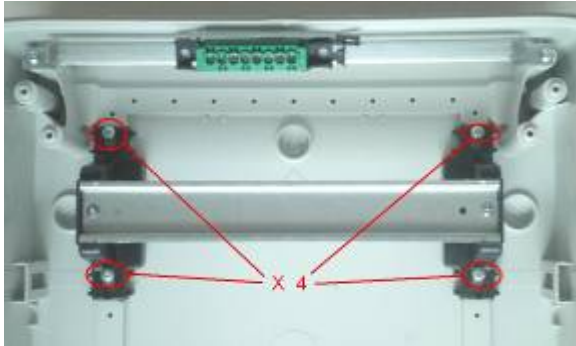
6) Remove the second gasket from the base



7) Break the window zip and remove the window



8) Take the base and unscrew the rail din from the base





9) Remove the terminal block from the base

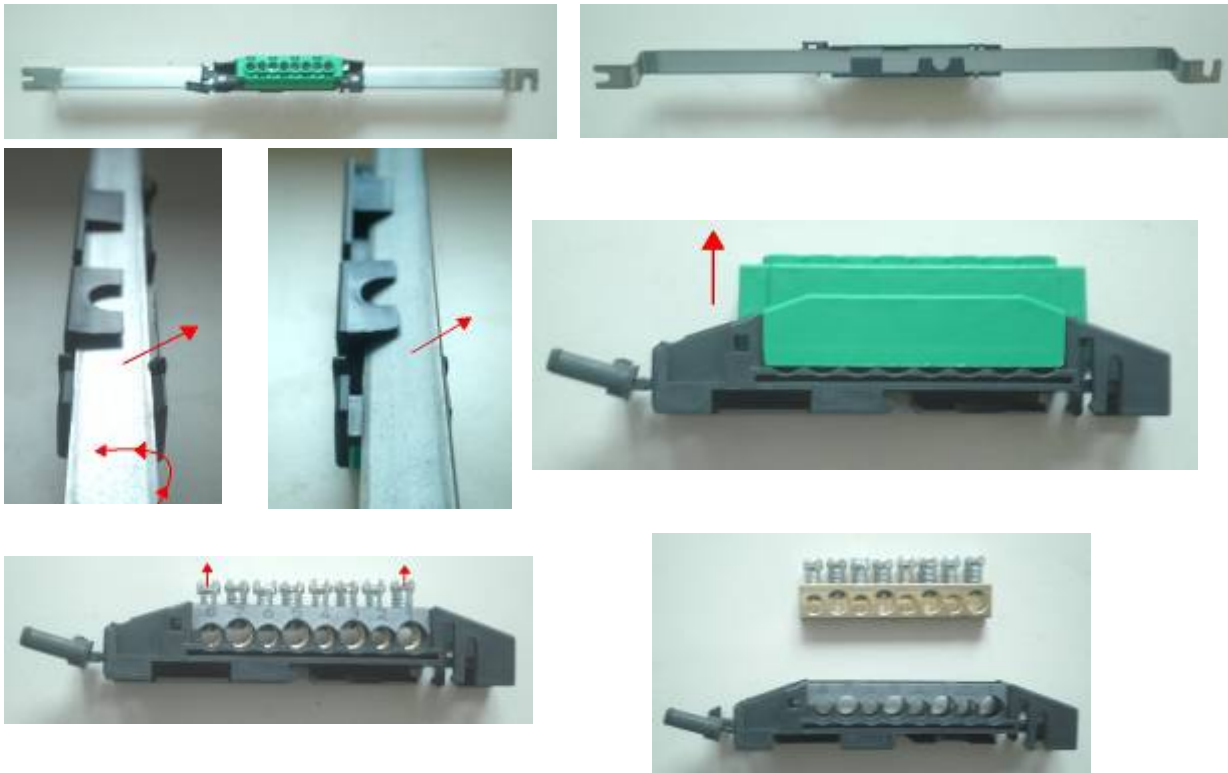


Other dismantling:

1) Separate the plastic and metal part of the rail din



2) Separate the plastic and metal part of the terminal block



Recommendation	Number on drawing	Components	Weight (g)	Comment
Special treatment	1	FRONT FACE	709	Bromide flame retardant
	2	BASE	1045	Bromide flame retardant
Other dismantling		RAIL DIN		
		TERMINAL BLOCK		

**Schneider Electric SA**

43-45, boulevard Franklin Roosevelt  
F-92500 Rueil-Malmaison Cedex (France)  
Tel.: +33 (0) 1 41 29 70 00  
www.schneider-electric.com

The version of the Guide used to create the document: End of Life  
Instruction Drafting Guide of Schneider Electric version V3

ENVEOLI111228EN

Publication date : 09/11/2011