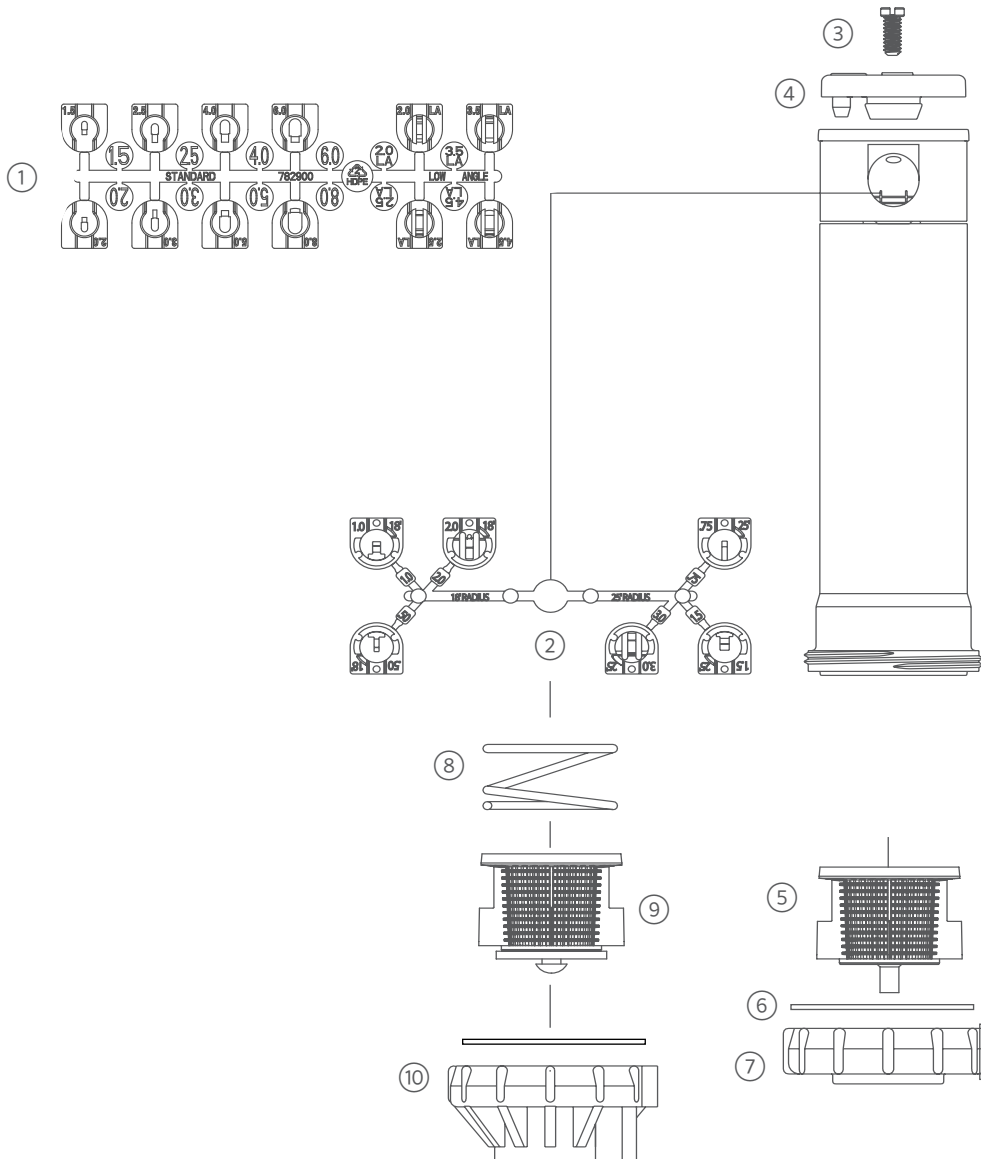


PGP-00: GEAR-DRIVEN ROTOR

ITEM	DESCRIPTION	CATALOG NO.	
1	Standard (8) and Low-Angle (4) Nozzle Set, Blue and Gray	782900SP	
2	Short-Radius Nozzle Set (6)	466100SP	
3	Nozzle Retainer Screw - Headed with Slot	180900	
4	Rubber Cover	Black	183600SP
		Purple	183605SP
5	Standard Filter Screen	Black	102600
6	O-Ring		170600
7	Standard Shrub Head Base		106900

OPTIONS		
8	Check Valve Spring	235000
9	Filter Screen/Check Valve Subassembly	142300SP
10	Shrub Head Base - Check Valve Model	234900



PGP-04 ULTRA, PGP-12 CV ULTRA: GEAR-DRIVEN ROTOR

ITEM	DESCRIPTION	CATALOG NO.	
1	Standard (8) and Low-Angle (4) Nozzle Set, Blue and Gray	782900SP	
2	Short-Radius Nozzle Set (6), Black	466100SP	
3	Nozzle Retainer Screw - Headed with Slot	180900	
4	Rubber Cover Assembly	Black	183600SP
		Purple	183605SP
5	Filter Screen - Standard Model	102600	
6	Check Valve Screen Assembly	142300SP	
7	Body Cap	103700SP	
8	Slip Washer - PGP-12-CV-Only	296100	
9	Riser Seal	181500SP	
10	Spring Seat	189900SP	
11	Body	4" (10 cm)	100200
		12" (30 cm)	179100

