



POWERSTEER AERATOR TA25DA



PARTS MANUAL

MAN4175385
Rev. A 08-2017

Operators Manual 4175836



SCHILLER

GROUNDS
CARE

CALIFORNIA

Proposition 65 Warning

Diesel engine exhaust and some of its constituents are known to the State of California to cause cancer, birth defects and other reproductive harm.

⚠ WARNING

The engine exhaust from this product contains chemicals known to the State of California to cause cancer, birth defects or other reproductive harm.

CALIFORNIA

Proposition 65 Warning

Battery posts, terminals, wiring insulation, and related accessories contain lead and lead compounds, chemicals known to the State of California to cause cancer and birth defects or other reproductive harm.

WASH HANDS AFTER HANDLING.

AERATOR

IMPORTANT MESSAGE

Thank you for purchasing this Classen product. You have purchased a world class product, one of the best designed and built anywhere.

This product comes with Parts and Operator's Manuals. The useful life and good service you receive from this product depends to a large extent on how well you read and understand this manual. Treat this product properly and adjust it as instructed, and it will give you many years of reliable service.

See a Classen dealer for any service or parts needed. Classen service ensures that you continue to receive the best results possible from Classen products. You can trust Classen replacement parts because they are manufactured with the same high precision and quality as the original parts.

Classen designs and builds its equipment to serve many years in a safe and productive manner. For longest life, use this product only as directed in the manual, keep it in good repair and follow safety warnings and instructions. You'll always be glad you did.

**Classen
1028 Street Road
Southampton, PA 18966**

TABLE OF CONTENTS	FIGURES	PAGE
SAFETY		4, 5
INTRODUCTION		6
OWNER'S RECORD.....		6
PRE-DELIVERY CHECKLIST		6
DELIVERY CHECKLIST		6
PARTS SECTION		7
MAIN FRAME ASSEMBLY	FIGURE 1	8, 9
POWER TRAIN ASSEMBLY	FIGURE 2	10, 11
HANDLE & CONTROL ASSEMBLY	FIGURE 3	12, 13
WARRANTY		BACK COVER

NOTICE !!!

Unauthorized modifications may present **extreme** safety hazards to operators and bystanders and could also result in product damage.

Classen strongly warns against, rejects and disclaims any modifications, add-on accessories or product alterations that are not designed, developed, tested and approved by Classen Engineering Department. Any Classen product that is altered, modified or changed in any manner not specifically authorized after original manufacture—including the addition of “after-market” accessories or component parts not specifically approved by Classen—will result in the Classen Warranty being voided.

Any and all liability for personal injury and/or property damage caused by any unauthorized modifications, add-on accessories or products not approved by Classen will be considered the responsibility of the individual(s) or company designing and/or making such changes. Classen will vigorously pursue full indemnification and costs from any party responsible for such unauthorized post-manufacture modifications and/or accessories should personal injury and/or property damage result.



This symbol means:
ATTENTION!
BECOME ALERT!

Your safety and the safety of others is involved.

Signal word definitions:

The signal words below are used to identify levels of hazard seriousness. These words appear in this manual and on the safety labels attached to Classen machines. For your safety and the safety of others, read and follow the information given with these signal words and/or the symbol shown above.

DANGER

DANGER indicates an imminently hazardous situation which, if not avoided, **WILL** result in death or serious injury.

WARNING

WARNING indicates a potentially hazardous situation which, if not avoided, **COULD** result in death or serious injury.

CAUTION

CAUTION indicates a potentially hazardous situation which, if not avoided, **MAY** result in minor or moderate injury. It may also be used to alert against unsafe practices or property damage.

CAUTION

CAUTION used without the safety alert symbol indicates a potentially hazardous situation which, if not avoided, **MAY** result in property damage

Schiller Grounds Care, Inc.

1028 Street Road
Southampton, PA 18966 U.S.A
Phone: 215-357-5110
Fax: 215-357-8045

MODEL NUMBER

SERIAL NUMBER

MODEL NUMBER: This number appears on sales literature, technical manuals and price lists.

SERIAL NUMBER: This number appears only on your machine. It contains the model number followed consecutively by the serial number. Use this number when ordering parts or seeking warranty information.

AERATOR

MAINTENANCE SAFETY

In general

- Maintain machine according to manufacturer's schedule and instructions for maximum safety and best results.
- Park machine on level ground.
- Never allow untrained personnel to service machine.
- Guards should only be removed by qualified maintenance technician for maintenance/service. Replace when work is complete.
- Adjust or repair only after the engine has been stopped and the tines have stopped moving.
- Disconnect spark plug wire(s) before doing any maintenance.
- Replace parts if worn, damaged or faulty. For best results, always replace with parts recommended by the manufacturer.
- Do not dismantle the machine without releasing or restraining forces which may cause parts to move suddenly.
- Provide adequate support, e.g. jack stands for lifted machine or parts if working beneath.
- Do not put hands or feet near or under rotating parts.
- Clean up spilled oil or fuel thoroughly.
- Replace faulty mufflers.
- To reduce fire hazards, keep the engine, muffler, and fuel storage area free of grass, leaves, debris buildup or grease.

Tines

The tines are sharp and can cut. Use extra caution when handling. Remove obstructions with care. Wrap the tines or wear gloves.

- Only replace tines. Never straighten or weld.
- Keep other persons away from tines.



Fuel

- Petrol (gasoline) and diesel fuels are flammable; petrol (gasoline) vapors are explosive. Use extra care when handling.



- Store only in containers specifically designed for fuel.
- When refueling or checking fuel level:
 - Stop the engine and allow to cool;
 - Do not smoke;
 - Refuel outdoors only;
 - Use a funnel;
 - Do not overfill;
 - If fuel is spilled, do not attempt to start the engine until the spill is cleaned up and vapors have cleared.
- Replace caps on fuel containers and tanks securely.

Sparks from static electricity can start fires or cause explosions. Flowing fuel can generate static electricity.

To prevent static electricity sparks:

- Keep fuel containers electrically grounded. Do not fill containers in a vehicle or on a truck or trailer bed with a plastic liner. Fill containers on the ground away from the vehicle.
- When practical, remove petrol (gas) powered equipment from the truck or trailer and refuel it on the ground. If equipment must be refueled on the truck or trailer, refuel from a portable container rather than a dispenser nozzle.
- Keep the dispenser nozzle in contact with the rim of the fuel tank or container opening until fueling is complete. Do not use a nozzle lock-open device.

Storage Safety

- Stop the engine and allow to cool before storing.
- Drain the fuel tank outdoors only.
- Store fuel in an approved container in a cool, dry place.
- Keep the machine and fuel containers in a locked storage place to prevent tampering and to keep children from playing with them.
- Do not store the machine or fuel container near heating appliances with an open flame, such as a water heater, or an appliance with a pilot light.
- Keep gasoline (petrol) storage area free of grass, leaves and excessive grease to reduce fire hazard.
- Clean grass and debris from tines, drives, mufflers and engine to help prevent fires.

INTRODUCTION

THANK YOU

Thank you for purchasing a CLASSEN Aerator

READ THIS MANUAL

Read your operator's manual carefully in its entirety. It contains safety, operating, maintenance, and adjustment instructions for your Aerator. By following the operating and maintenance instructions you will prolong the life of your equipment and maintain its maximum efficiency. Failure to do so could result in personal injury or equipment damage.

This manual should be considered a permanent part of your Aerator and should remain with it if you sell it.

WARRANTY

Refer to last page.

MEASUREMENTS

U.S. Units of measure are used in this manual.

SERIAL NUMBERS

Write frame and engine serial numbers, plus model numbers in "Owner's Record" section below. You may need these numbers when you order parts. The serial number stick plate is located on the right rear of the Aerator frame.

ORDERING PARTS

When ordering parts, always give the serial number and model of your Aerator as well as the quantity, part number and description of the part needed.

DIRECTIONS

"Right Hand" and "Left Hand" sides of the Aerator are determined by facing the "back" of the Aerator as you would operate the machine.

OWNER'S RECORD

DATE PURCHASED _____

AERATOR MODEL NUMBER _____

AERATOR SERIAL NUMBER _____

ENGINE MODEL NUMBER _____

ENGINE SERIAL NUMBER _____

PRE-DELIVERY CHECK LIST

Check the following before you deliver the Aerator to the customer.

1. Guards and shields fastened in place.
2. Decals fastened and legible.
3. Weight bar installed.
4. Gas lever on engine turned on.
5. All lubrication points greased.
6. 6:1 gearbox oil level.
7. Engine oil level.
8. Air cleaner.
9. Touch up scratches.
10. Chain(s) tight.
11. Lowering handle working properly.
12. Control handle(s) working to tighten V-belt(s).
13. Add fuel, start engine, test run.

DATE SET UP _____/_____/_____

DELIVERY CHECK LIST

Review the operators manual with the customer.

1. Schiller Grounds Care, Inc. warranty.
2. Safe operation and service.
3. How to use controls.
4. Operating the machine correctly.
5. Transporting the Aerator.
6. Correct fuel and lubricants.
7. Daily and periodic inspections.
8. Changing oil after break-in period.
9. Servicing the Aerator regularly and correctly.
10. Schiller Grounds Care, Inc. parts and service.
11. Give the customer the operators manual and encourage customer to read it.

DATE DELIVERED _____/_____/_____

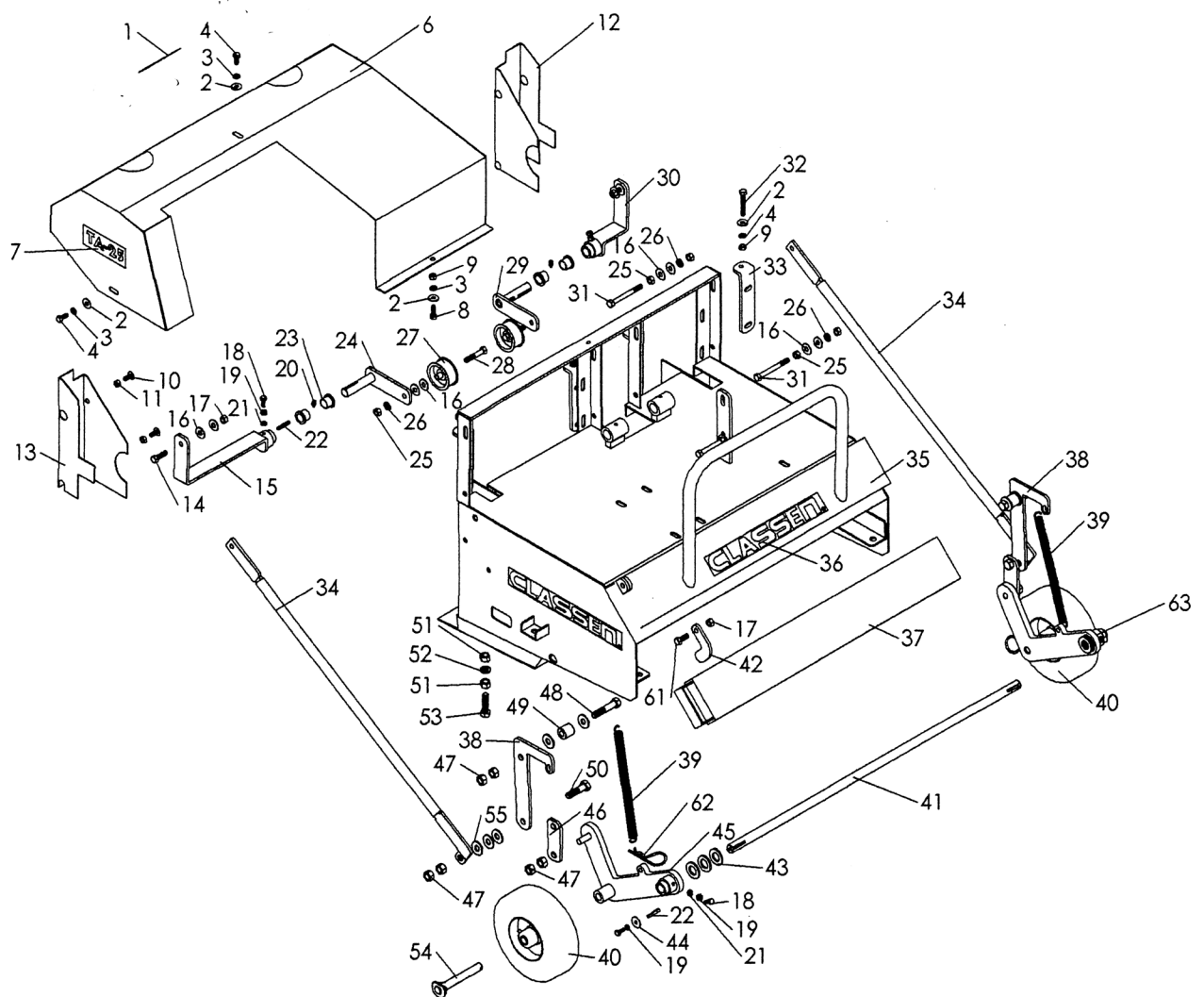
SIGNATURE _____

PARTS SECTION

MAIN FRAME ASSEMBLY

AERATOR

FIGURE 1



MAIN FRAME ASSEMBLY

AERATOR

FIGURE 1

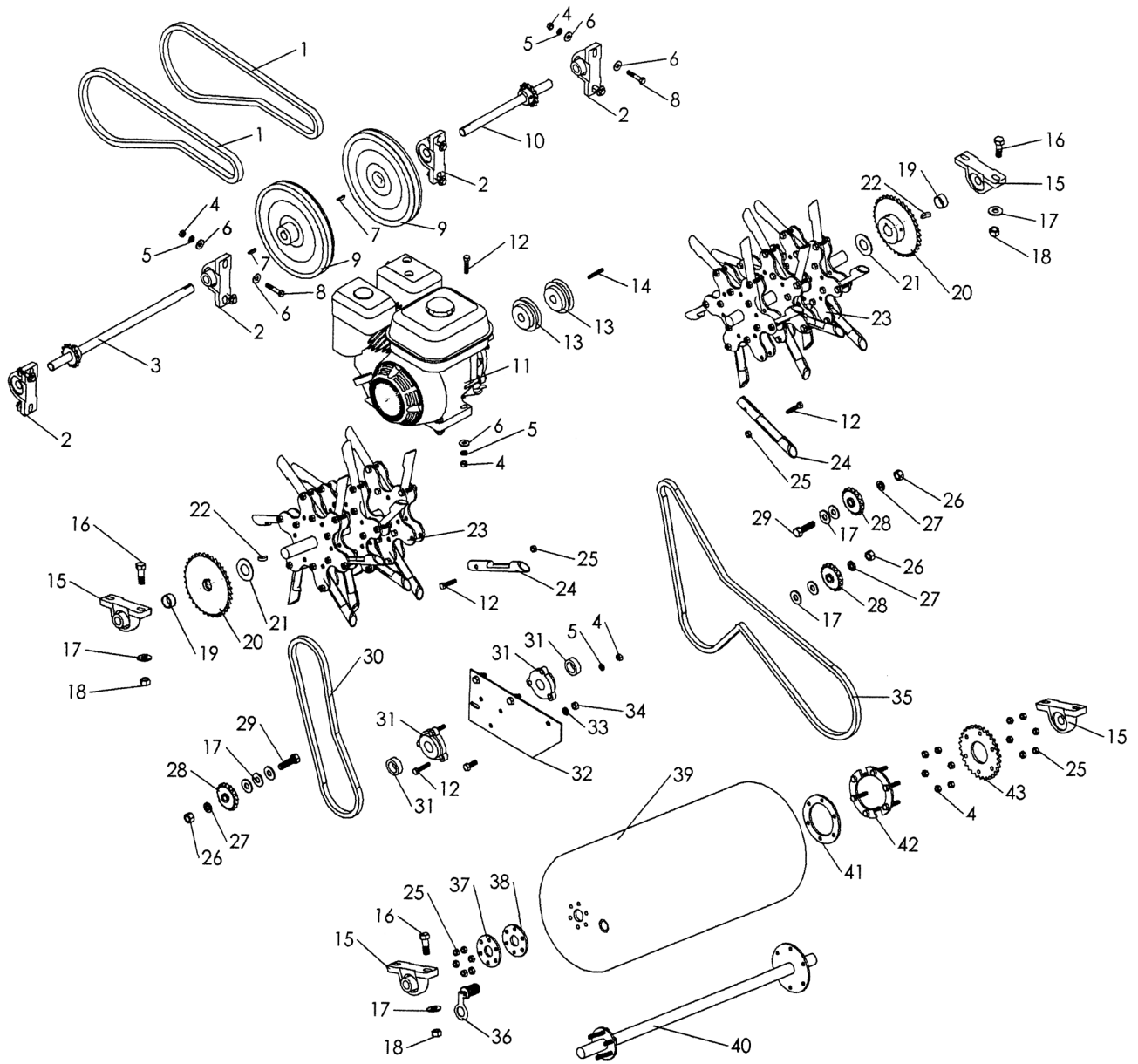
ITEM	PART NO.	DESCRIPTION	QTY	ITEM	PART NO.	DESCRIPTION	QTY
1	20942	DECAL, "DANGER"	1	47	C500131	1/2" LOCK NUT	12
2	C500083	5/16" FLAT WASHER	8	48	C500135	1/2" x 2-1/2" BOLT	2
3	C500115	5/16" LOCK WASHER	8	49	C300005.7	BUSHING SPACER 50	2
4	C500140	5/16" x 3/4" BOLT	3	50	C500149	1/2" x 2" BOLT	2
5	4171825	DECAL, CLASSEN PRO	2	51	C500106	1/2" NUT	4
6	4175359	S-GUARD, PULLEY, ASSEMBLY	1	52	C500006	1/2" LOCK WASHER	2
7	4173339	DECAL, "POWERSTEER"	2	53	C500174	1/2" x 1-3/4" BOLT	2
8	C500147	BOLT, 5/16-18 x 1-1/2	1	54	C100049	PIN, REAR AXLE	2
9	C500101	5/16" NUT	5	55	C500034	1/2" FLAT WASHER	8
10	C500163	5/16" x 3/4" CARRIAGE BOLT	4	56*	2000577	DECAL, "ALL GUARDS"	1
11	C500169	5/16" LOCK NUT	4	57*	4171157	DECAL, "POWERSTEER".	1
12	C400393	CHAIN GUARD, (L.H.)	1	58*	C100055	DECAL, "SERIAL NUMBER"	1
13	C400394	CHAIN GUARD, (R.H.)	1	59*	C100257	DECAL, "PATENT"	1
14	C500134	3/8" x 1-1/4" BOLT	2	60*	C100073	LUBRICATION TAG	1
15	C400085	CLUTCH ARM, (R.H.)	1	61	C500043	3/8" x 1" BOLT	1
16	C500042	3/8" FLAT WASHER	12	62	C500096	5/32" x 3" BRIDGE PIN CLIP	2
17	C500041	3/8" LOCK NUT	2	63	C400025.7	AXLE SUPPORT ARM (LH)	1
18	C500029	1/4" x 3/4" BOLT	4	64	C500165	3/8" X 4-1/2" BOLT	1
19	C500136	1/4" NUT	4	65*			
20	C500001	1/4" x 28 GREASE FITTING	2				
21	C500137	1/4" LOCK WASHER	4				
22	C500011	3/16" x 1" SQ. KEY	4				
23	C100021	BRASS BUSHING	4				
24	C400021	IDLER ARM, (R.H.)	1				
25	C500129	3/8" NUT	7				
26	C500130	3/8" LOCK WASHER	4				
27	C100010	IDLER PULLEY	2				
28	C500091	3/8" x 2" BOLT	2				
29	C400087	IDLER ARM, (L.H.)	1				
30	C400083	CLUTCH ARM, (L.H.)	1				
31	C500170	3/8" x 4-1/2" BOLT	2				
32	C500114	5/16" x 2-1/4" TAP BOLT	4				
33	C300049	CHAIN TIGHTENING PLATE	4				
34	4174338.7	LINKAGE ARM SPLIT DRIVE	2				
35	C400079	TA-25D MAIN FRAME	1				
36	4171963	DECAL, "CLASSEN"	3				
37	4174349.7	WEIGHT BAR	1				
38	C400015.7	SPRING ARM	2				
39	C100040	FRAME SPRING	2				
40	C100031	8" REAR TIRE ASSEMBLY	2				
41	C200012	KEYED SHAFT	1				
42	C300009	WEIGHT STOP FLAT	1				
43	C500194	3/4" FLAT WASHER	6				
44	C500164	1/4" FENDER WASHER	2				
45	C400026.7	AXLE SUPPORT ARM, (RH)	1				
46	C300006.7	PIVOT FLAT	2				

*NOT ILLUSTRATED

POWER TRAIN ASSEMBLY

AERATOR

FIGURE 2



AERATOR

POWER TRAIN ASSEMBLY

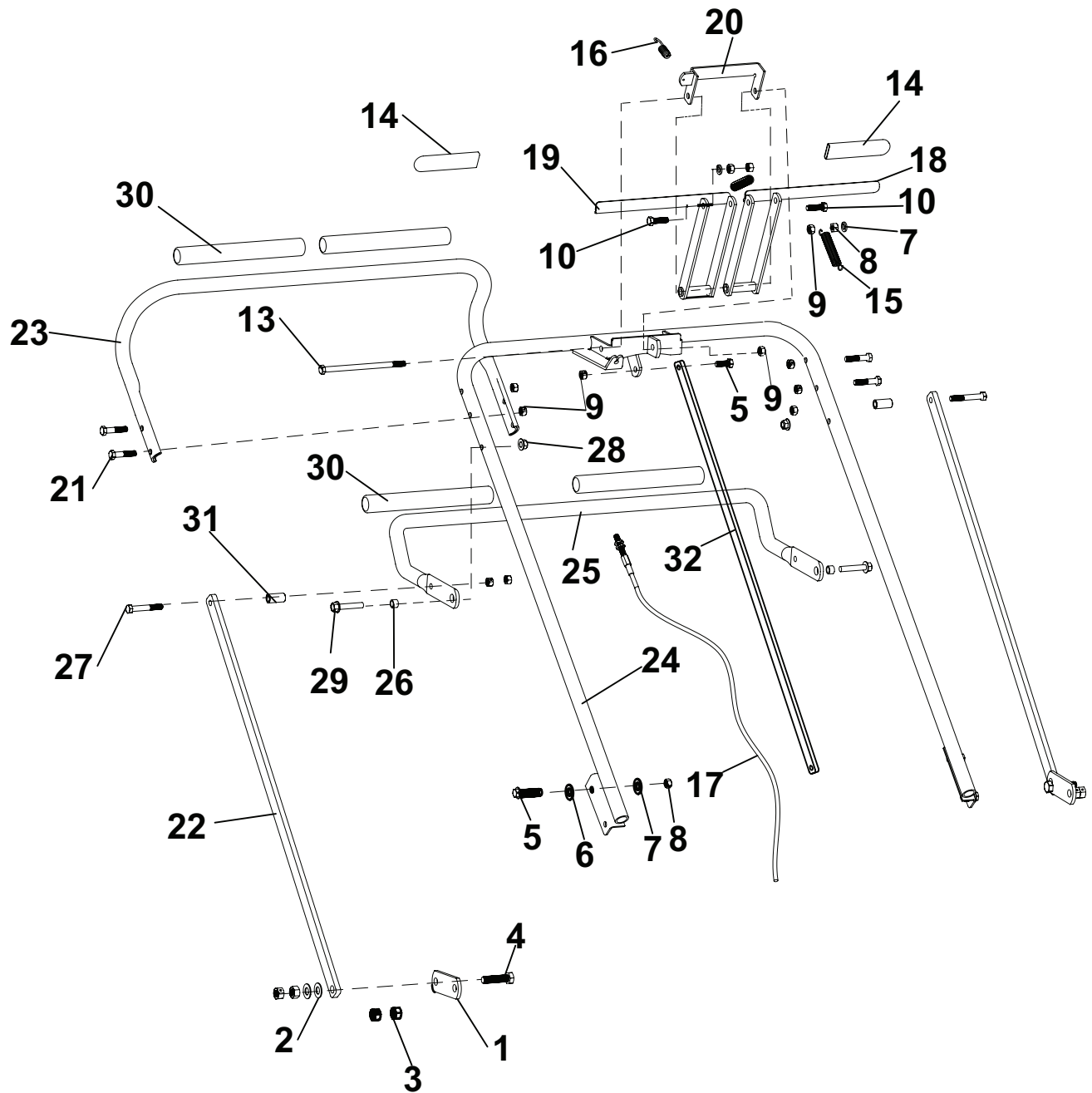
FIGURE 2

ITEM	PART NO.	DESCRIPTION	QTY	ITEM	PART NO.	DESCRIPTION	QTY
1	C100039	BX-43 V-BELT	2				
2	C100013	3/4" BEARING w/ COLLAR	4				
3	C200022	JACK SHAFT ASSEMBLY, (R.H.)	1				
4	C500101	5/16" NUT	21				
5	C500115	5/16" LOCK WASHER	15				
6	C500083	5/16" FLAT WASHER	20				
7	C500173	3/16" x 7/8" HALF MOON KEY	2				
8	C500074	5/16" x 1-3/4" BOLT	8				
9	4174928.7	8" PULLEY & HUB w/o KEY	2				
10	C200021	JACK SHAFT ASSEMBLY, (L.H.)	1				
11	C100037	4.0 HP HONDA ENGINE	1				
12	C500147	5/16" x 1-1/2" BOLT	79				
13	C100038	3" x 3/4" PULLEY w/ HUB	2				
14	C500231	3/16" x 1-3/4" SQ. KEY	1				
15	C100004	1" BEARING w/ COLLAR	4				
16	C500150	1/2" x 1-1/2" BOLT	8				
17	C500034	1/2" FLAT WASHER	15				
18	C500131	1/2" LOCK NUT	8				
19	C300011	OUTSIDE DRUM SHAFT SPACER	2				
20	C200009	#40 x 36 SPROCKET & HUB	2				
21	C300131	2" MACHINERY WASHER	2				
22	C500003	1/4" x 7/8" HALF MOON KEY	2				
23	C700017	TINE DISC SHAFT ASSEMBLY	2				
24	C100032	PLUGGING TINE	36				
25	C500169	5/16" LOCK NUT	84				
26	C500106	1/2" NUT	3				
27	C500006	1/2" LOCK WASHER	3				
28	C100043	IDLER PULLEY	3				
29	C500174	1/2" x 1-3/4" BOLT	2				
30	C100151	#40 x 75 PITCH CHAIN w/ LINK	1				
31	C100155	1" FLANGE BEARING w/ COLLAR	2				
32	C300057.7	3/16" LOWER PLATE	1				
33	C500130	3/8" LOCK WASHER	3				
34	C500129	3/8" NUT	3				
35	C100108	#40 x 139 PITCH CHAIN	1				
36	C100109	WATER DRUM PLUG	1				
37	C100083	SMALL STEEL WASHER	1				
38	C100087	SMALL RUBBER GASKET	1				
39	C100086	WATER DRUM 40	1				
40	C700010	DRUM AXLE	1				
41	C100084	LARGE RUBBER GASKET	1				
42	C700011	INNER HALF-PLATE w/ STUDS	2				
43	C200015	#40 x 30 SPROCKET	1				

HANDLE & CONTROL ASSEMBLY

AERATOR

FIGURE 3



AERATOR

HANDLE & CONTROL ASSEMBLY

FIGURE 3

ITEM	PART NO.	DESCRIPTION	QTY	ITEM	PART NO.	DESCRIPTION	QTY
1	C300006.7	FLAT, PIVOT	2				
2	C500034	WASHER, 1/2 FLAT	5				
3	C500131	NUT, 1/2-13 LOCK	8				
4	C500149	BOLT, 1/2-13 x 2	2				
5	C500043	BOLT, 3/8-16 X 1	4				
6	C500042	WASHER, 3/8" FLAT	3				
7	C500130	WASHER, 3/8 LOCK	6				
8	C500129	NUT, 3/8-16	5				
9	C500041	NUT, 3/8-16 LOCK	12				
10	C500134	BOLT, 3/8-16 x 1-1/4	2				
11	C500101	NUT, 5/16-18	5				
12	C500169	NUT, 5/16-18 LOCK	10				
13	C500162	BOLT, 3/8-16 X 6-1/2	1				
14	C100007	GRIP, RUBBER	2				
15	C100034	SPRING, CLUTCH CABLE	2				
16	C100035	SPRING, THROTTLE	1				
17	C100149	CABLE W/ENDS, THROTTLE	1				
18	C400081.7	HANDLE, L.H. CONTROL	1				
19	C400090.7	HANDLE, R.H. CONTROL	1				
20	C400088.7	ARM, THROTTLE	1				
21	C500079	BOLT, 3/8-16 X 1-3/4	4				
22	4174338.7	LINKAGE ARM	2				
23	4174321.7	UPPER HANDLE	1				
24	4174328.7	LOWER HANDLE, MAIN	1				
25	4174322.7	HANDLE, LIFT, TA25	1				
26	4172652	SPACER - 9/16 OD x 3/8 ID x 3/8	2				
27	C500154	BOLT, 3/8-16 x 2-1/2	2				
28	94268-03	NUT-FL NYLON LOCK	2				
29	94262-014	BLT-FLG HD	2				
30	4173160	GRIP - 1" X 10"	4				
31	C400446	SPACER, 5/16 X 2	2				
32	4174339.7	HANDLE BRACE SPLIT DRV	1				

CLASSEN® 2 YEAR LIMITED SERVICE AND WARRANTY POLICY

Schiller Grounds Care, Inc.
1028 Street Road • Southampton, PA 18966
Telephone: 1-800-366-6268

TWO YEAR LIMITED WARRANTY

Effective April 1, 2007

For the period of two years from the date of purchase, CLASSEN will repair or replace for the original purchaser free of charge, any part or parts found upon the examination of our factory authorized service station, or by the factory in Southampton, PA to be defective in material or workmanship. All transportation charges on parts submitted for repair or replacement under this warranty shall be borne by the purchaser.

This warranty does not include engines or engine parts, tires, batteries, or gearboxes that are covered under separate warranties furnished by their manufacturer or supplier, nor does it include normal maintenance parts, including but not limited to, spark plugs, points, filters, blades, and lubricants.

All service under this warranty will be furnished or performed by our factory authorized service stations.

There is no other expressed warranty. Implied warranties, including those of merchantability and fitness for a particular purpose, are limited to two years from the date of purchase and to the extent permitted by law, any and all implied warranties are excluded. The above remedy of repair and replacement of defective parts is the purchaser's exclusive remedy for any defect, malfunction or breach of warranty. Liability for incidental or consequential damages under any and all warranties is excluded to the extent permitted by law.

NORMAL RESPONSIBILITIES OF THE SELLER AND THE USER

1. The Distributor or Dealer is responsible for the proper assembly and preparation of the product for delivery to the end user.
2. The User is responsible for reading the Manual and Instructions.
3. The User is responsible for proper operation and maintenance as described in the manual.
4. The User is responsible for the replacement of wear items such as blades, belts, tires, batteries, etc.
5. The User is responsible for damage due to improper operation and maintenance, as well as abuse.

All claims must be received by the factory 30 days after the end of the warranty period to receive warranty consideration.

CLASSEN®
SCHILLER GROUNDS CARE, INC.
1028 STREET ROAD, P.O. BOX 38
SOUTHAMPTON, PA 18966
PHONE 877-596-6337 • FAX 215-357-8045